

Technical Newsletter

#tnl2014-0019e

1 / 5



Ultrasonic Dicing Unit: Change to New US Mount Part Number

Introduction

We have changed the US mount installed in the ultrasonic dicing unit.

The new US mount, which enables electrode probe replacement, can reduce the propensity to wear, reduce maintenance costs, and reduce the time required to return the unit to operation.

Details of the change in the US mount

- We changed the conventional US mount (Part No.MUSS-020001-1) to the new US mount (Part No.MUSS-020002-0) .
- This is effective starting February, 2015.
- The new type US mount can be installed in any ultrasonic dicing unit.
- When replacing the electrode probe, it is necessary to purchase two new electrode probes and a special tool (a special Phillips screwdriver).

Part Name	Part No.
Electrode probe (Two)	MUSZ-020005-0
Special Phillips screwdriver	MUSZ-020006-0

Improvement detail of the new US mount

- Modified tip shape of the electrode probe, changing from the present crown shape to a round shape, thereby reducing the propensity to wear.
- Modify the overall design to allow for simple piece part change out on the electrode probe subassembly components which reduces ongoing maintenance costs and shortens the time required to return the unit to operation.

Our Request

- Regarding the US mount electrode probe replacement procedure, please follow the procedure described in [The new US mount electrode probe replacement manual] of this technical newsletter.

Inquiry

Please contact your local DISCO sales representative or DISCO service office, if you have any questions regarding this matter.

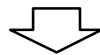
New US mount electrode probe replacement manual

Process Flow

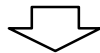
STEP 1 : Prepare the parts and the tool



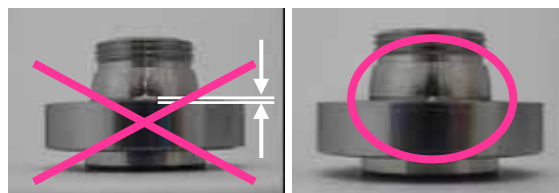
STEP 2 : Remove the existing electrode probe



STEP 3 : Install the new electrode probe



STEP 4 : Check the condition



Technical Newsletter

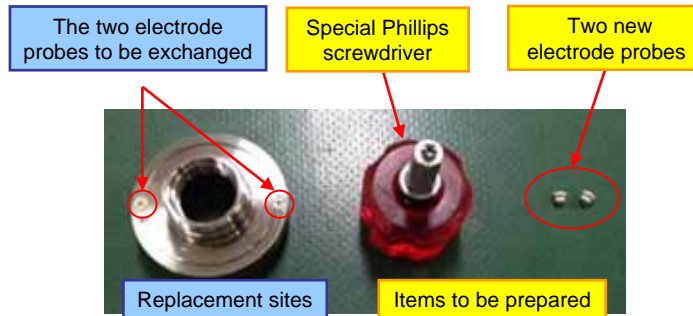
#tn12014-0019e

3 / 5



STEP 1 : Prepare the parts and the tool

- US Mount
- New electrode probes
- Special Phillips screwdriver

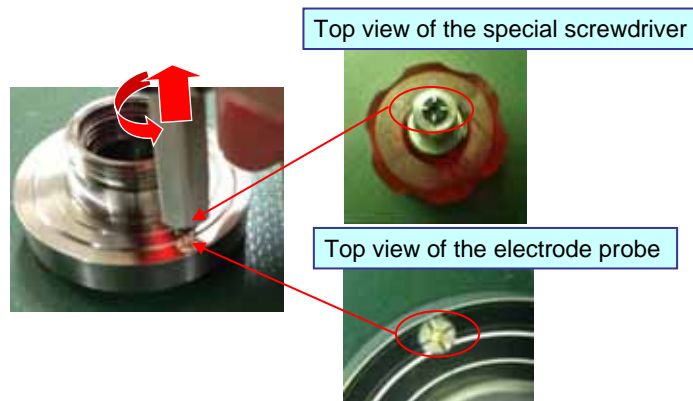


STEP 2 : Remove the existing electrode probe assembly

- Procedure for removing the existing electrode probe assembly
Place the US mount on a flat location.



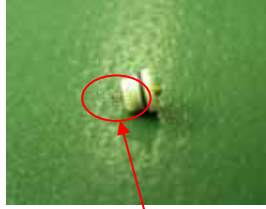
Use the special Phillips screwdriver to loosen the existing electrode probes by turning counter-clockwise.



STEP 3 : Install the new electrode probe assembly

- Electrode probe assembly installation procedure

Visually check the condition of the new electrode probes.



Spring

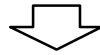
Make sure that the spring is present and that it is not bent.



Attach the new electrode probe to the tip of the special screwdriver.



Be careful to avoid damaging the electrode probe tip.



Tighten the electrode probe assembly to the electrode part of US mount using clockwise rotation.



For the resin bolt, please be careful to not over tighten.

Technical Newsletter

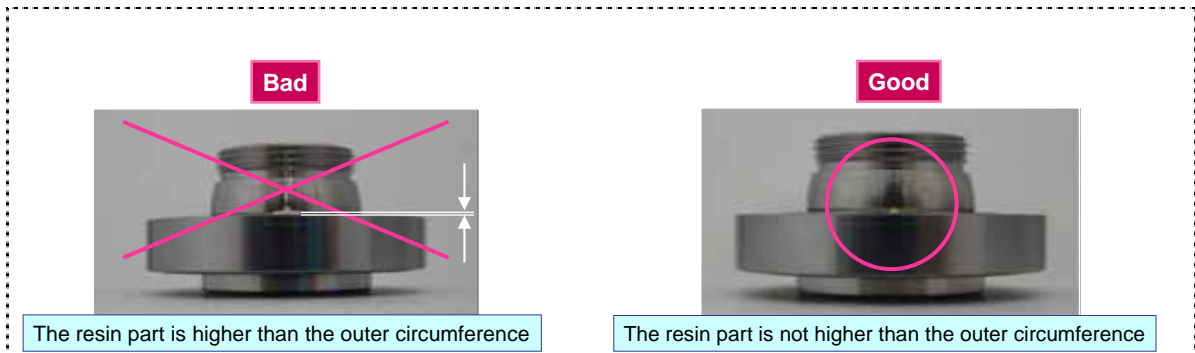
#tnl2014-0019e
5 / 5



STEP 4 : Check the condition

- Electrode probe assembly installation complete condition

If the resin part of the probe is not higher than mount outer circumference, the installation is complete.



The resin part is higher than the outer circumference

The resin part is not higher than the outer circumference
